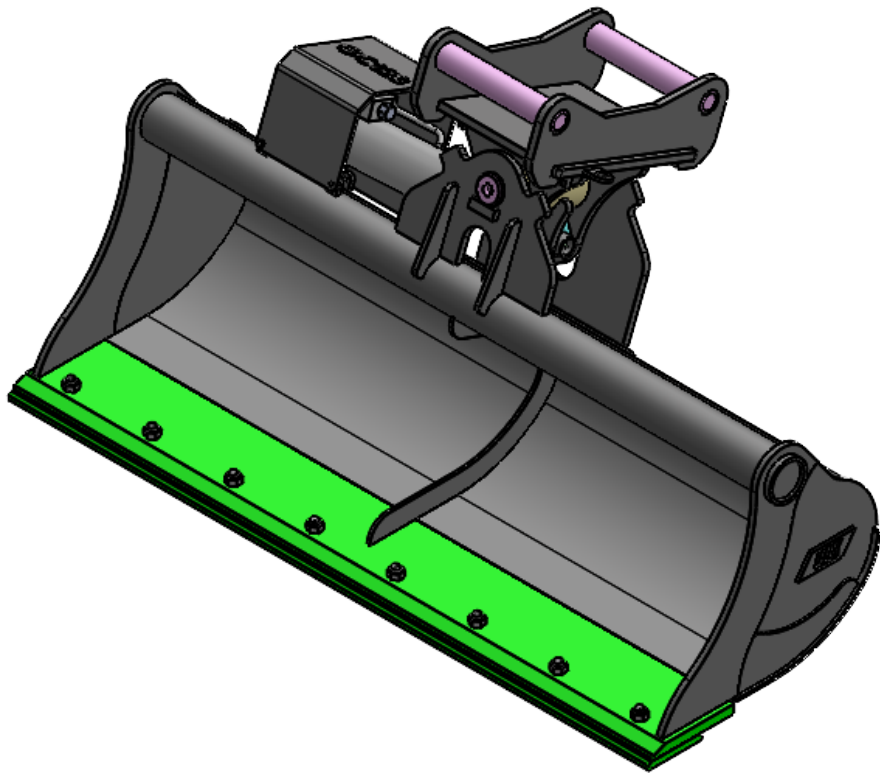
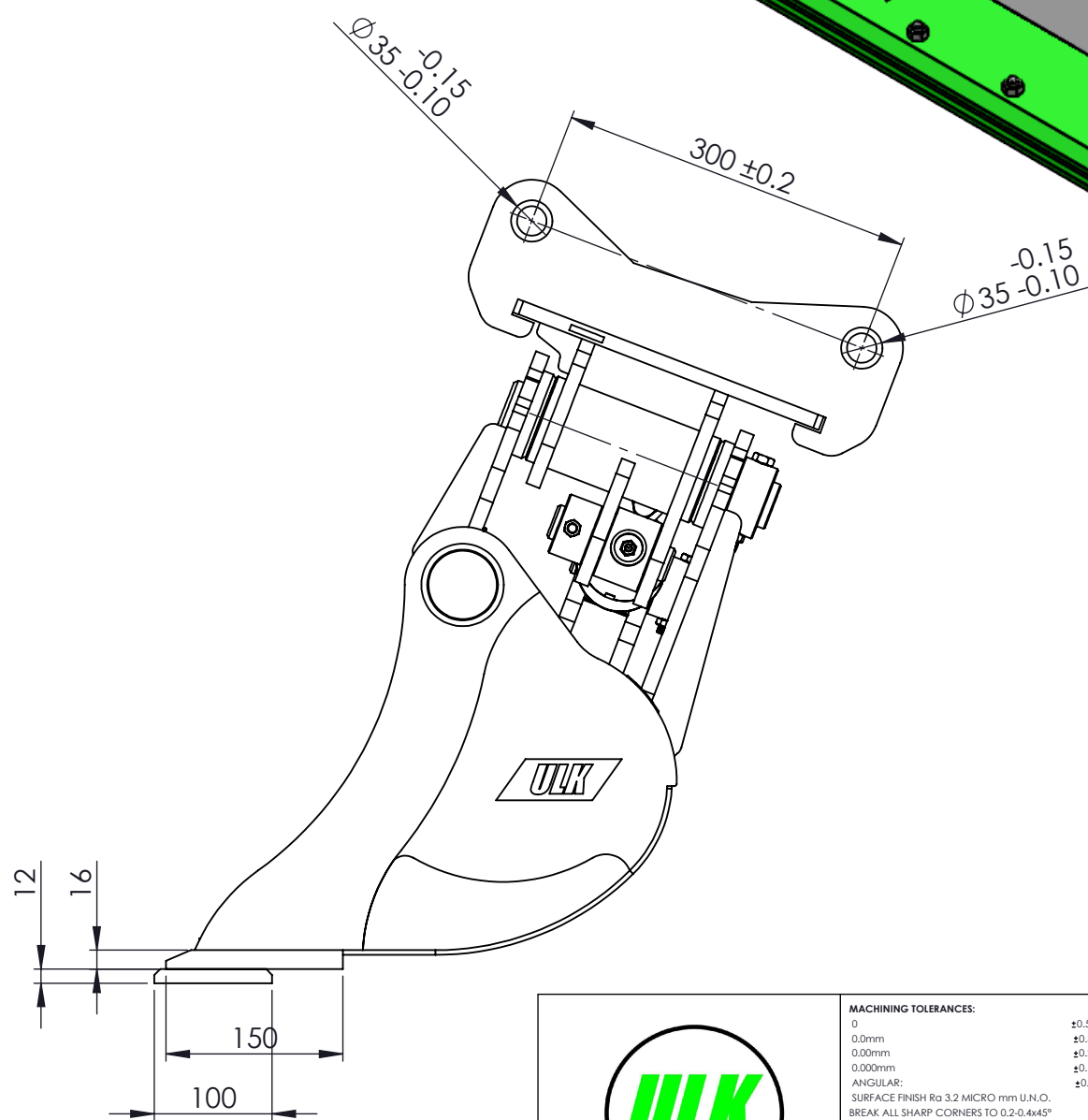
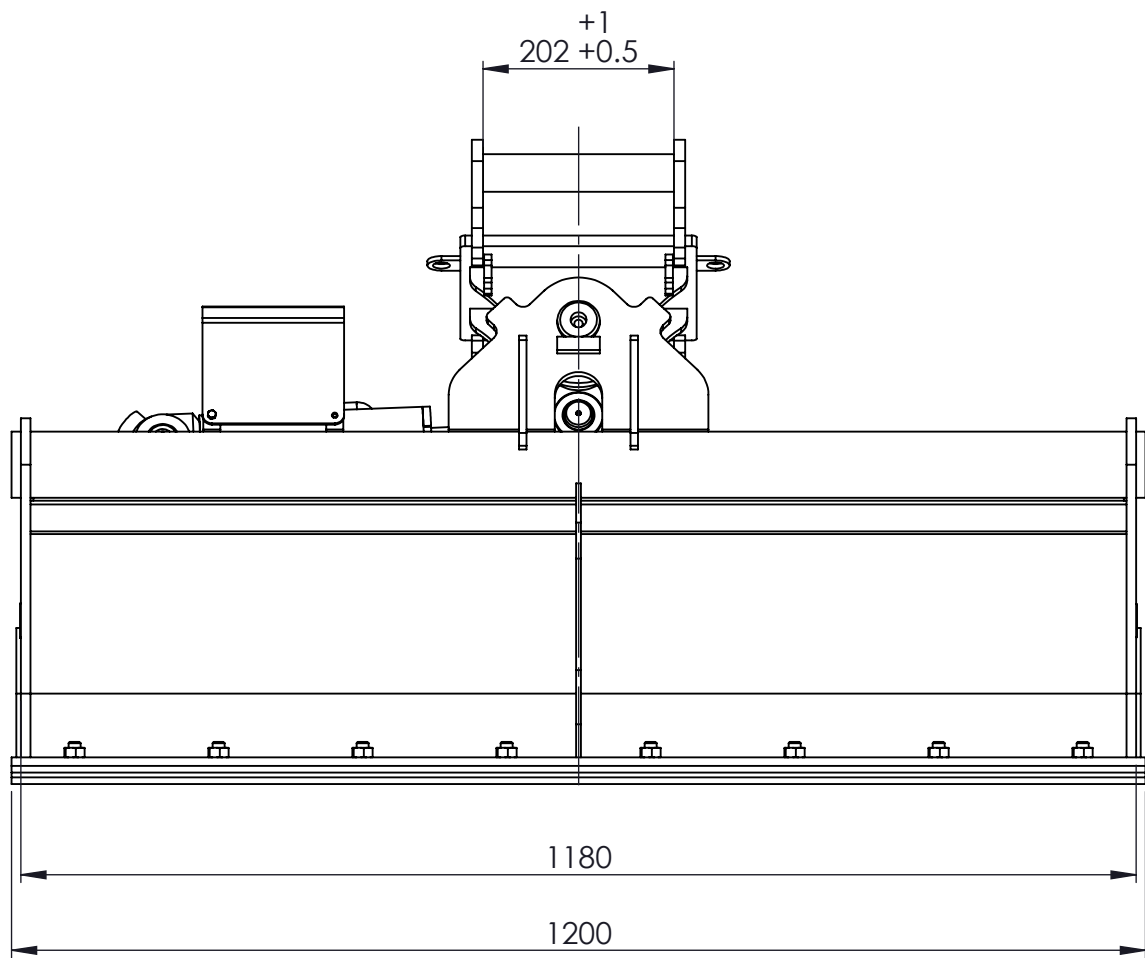
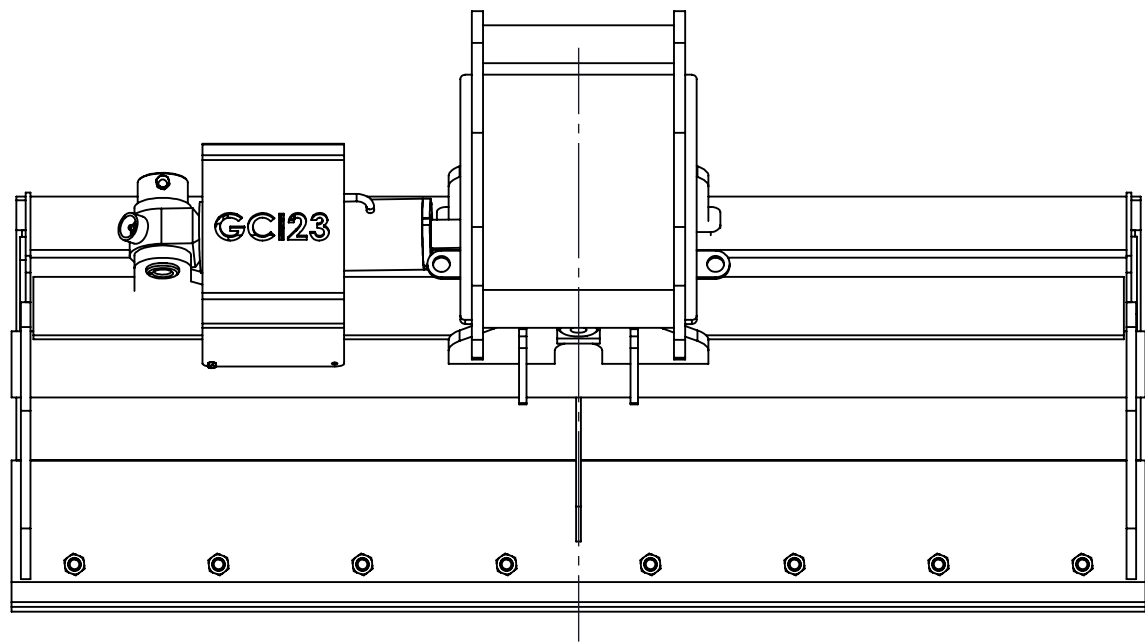


| ITEM NO. | PART NUMBER | DESCRIPTION | QTY. | Weight |
|----------|-------------------|--|------|--------|
| 1 | GCI23-S40-1200-42 | TILTING BUCKET SHELL 2-3T-1200MM-0.123M3 | 1 | 91.00 |
| 2 | GCI23-S40-1200-44 | 2-3T TILT BUCKET TOP ASSEMBLY | 1 | 24.43 |
| 3 | GCI23-S40-1200-37 | PIVOT PIN - TOP ASSY | 1 | 2.28 |
| 4 | GC123-S40-1200-38 | CYLINDER MTG PIN | 1 | 0.56 |
| 5 | GC123-S40-1200-39 | CYLINDER MOUNTING PIN | 1 | 0.55 |
| 6 | GCI23-S40-1200-40 | CYLINDER PROTECTION GUARD | 1 | 2.42 |
| 7 | GCI12-S30-1000-47 | CYLINDER GCI12-S30 | 1 | 8.86 |
| 8 | GCI12-S30-1000-35 | M5x20 HEX BOLT ZINC COATED GR10.9 | 1 | 0.00 |
| 9 | GCI12-S30-1000-36 | M8x65 HEX BOLT ZINC COATED GR10.9 | 2 | 0.03 |
| 10 | GCI12-S30-1000-37 | M10x80 HEX BOLT ZINC COATED GR10.9 | 1 | 0.06 |
| 11 | GCI12-S30-1000-39 | M5 HEX NUT ZINC COATED GR10.9 | 1 | 0.00 |
| 12 | GCI12-S30-1000-51 | M8 HEX NUT ZINC COATED GR10.9 | 2 | 0.00 |
| 13 | GCI12-S30-1000-56 | M10 HEX NUT ZINC COATED GR10.9 | 1 | 0.01 |



| | | | | | | | |
|--|----|------------|---|--|---|--|----------------|
| | | | MACHINING TOLERANCES: 0 ±0.50mm 0.0mm ±0.30mm 0.00mm ±0.20mm 0.000mm ±0.10mm ANGULAR: ±0.50 SURFACE FINISH Ra 3.2 MICRO mm U.N.O. BREAK ALL SHARP CORNERS TO 0.2-0.4x45° ALL DIMENSIONS ARE IN MM. TIGHTENING TORQUES ACCRODING TO EG-002-U.O.N | | FABRICATION TOLERANCES LINEAR DIMENSIONS 0 to 500mm ±0.5mm LINEAR DIMENSIONS 501mm to 1500mm ±1.0mm LINEAR DIMENSIONS > 1501mm TO BE WITHIN ±2.0mm ANGULAR ±0.5mm PLATE THICKNESS & SECTION SIZE TO BE WITHIN NORMAL AS1365 TOLERANCES U.O.N. WELDING SYMBOLS AND WELDING ACCORDING TO AS 1554.1:2014 ALL WELD SIZES ARE FINAL ALL INSPECTIONS TO BE VISUAL & DIMENSIONAL U.O.N. SURFACE PROTECTION AS PER PROJECT SPECIFICATION | | |
| | | | TITLE: TILTING BUCKET 2-3T-1200MM-0.123M3 | | DO NOT SCALE DRAWING IF IN DOUBT, ASK | | |
| | | | | | SCALE: 1:50 | | |
| | | | | | MAT'L : WEIGHT (KGS): | | |
| | | | | | REFER BOM 130.26 | | |
| DRW BY | HK | 10/07/2025 | DWG No. GCI23-S40-1200-43 | | SIZE: A4 | | SHEETS: 1 OF 3 |
| CKD & APP BY | | | | | | | |
| This design or drawing is the property of ULK and must not be used, reproduced, copied or disclosed wholly or in part without the written permission of ULK. PROPRIETRY, CONFIDENTIAL & COPYRIGHT © | | | | | | | |

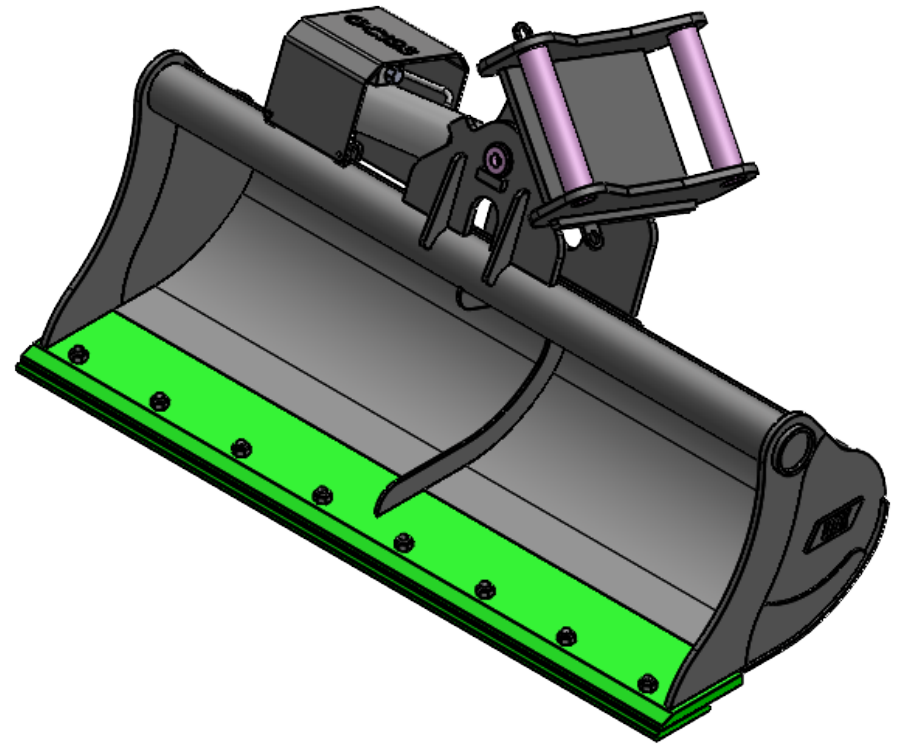
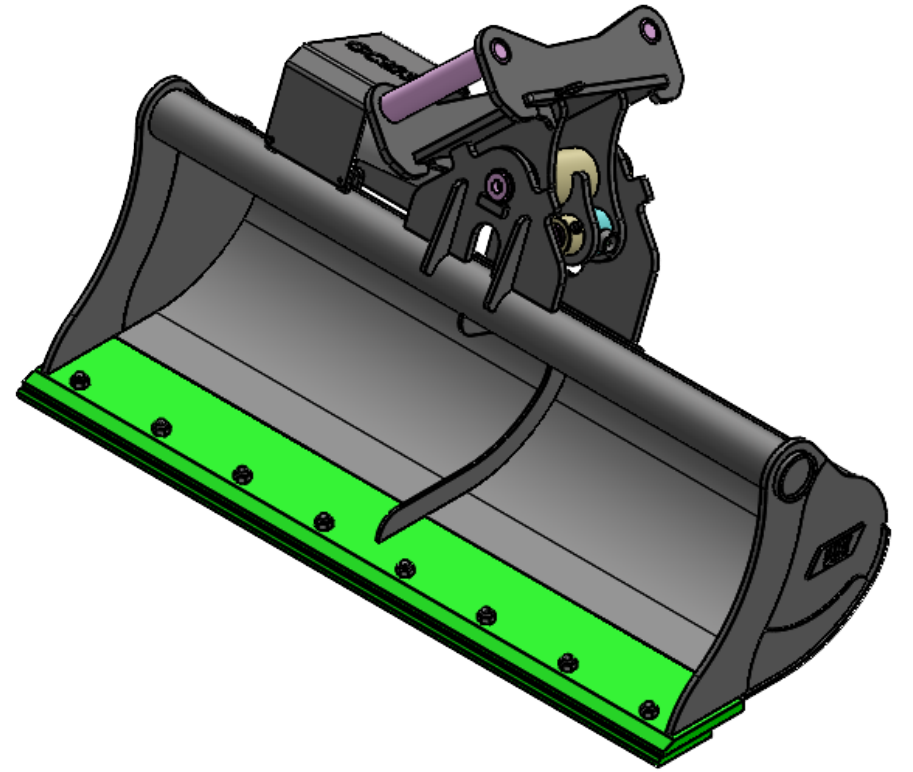
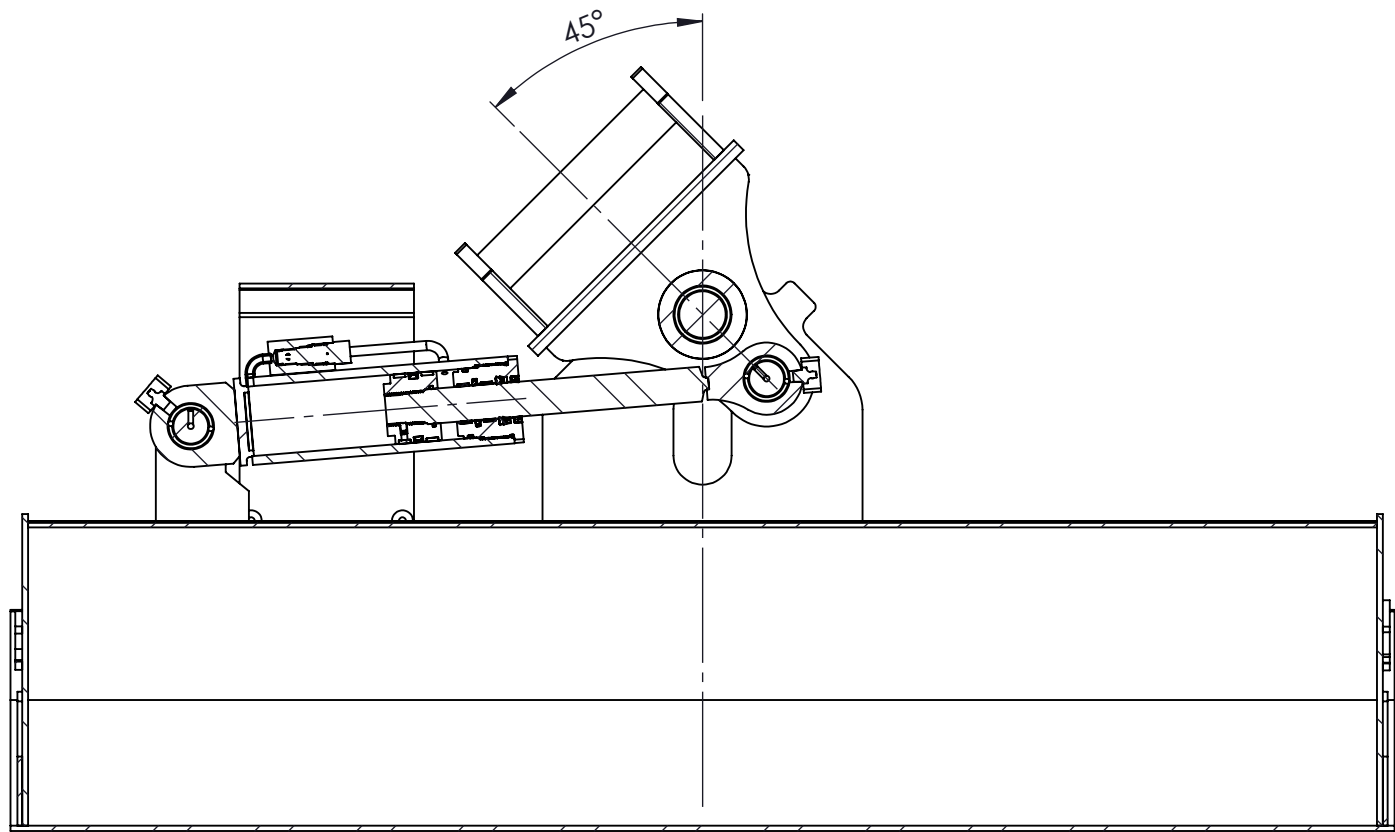
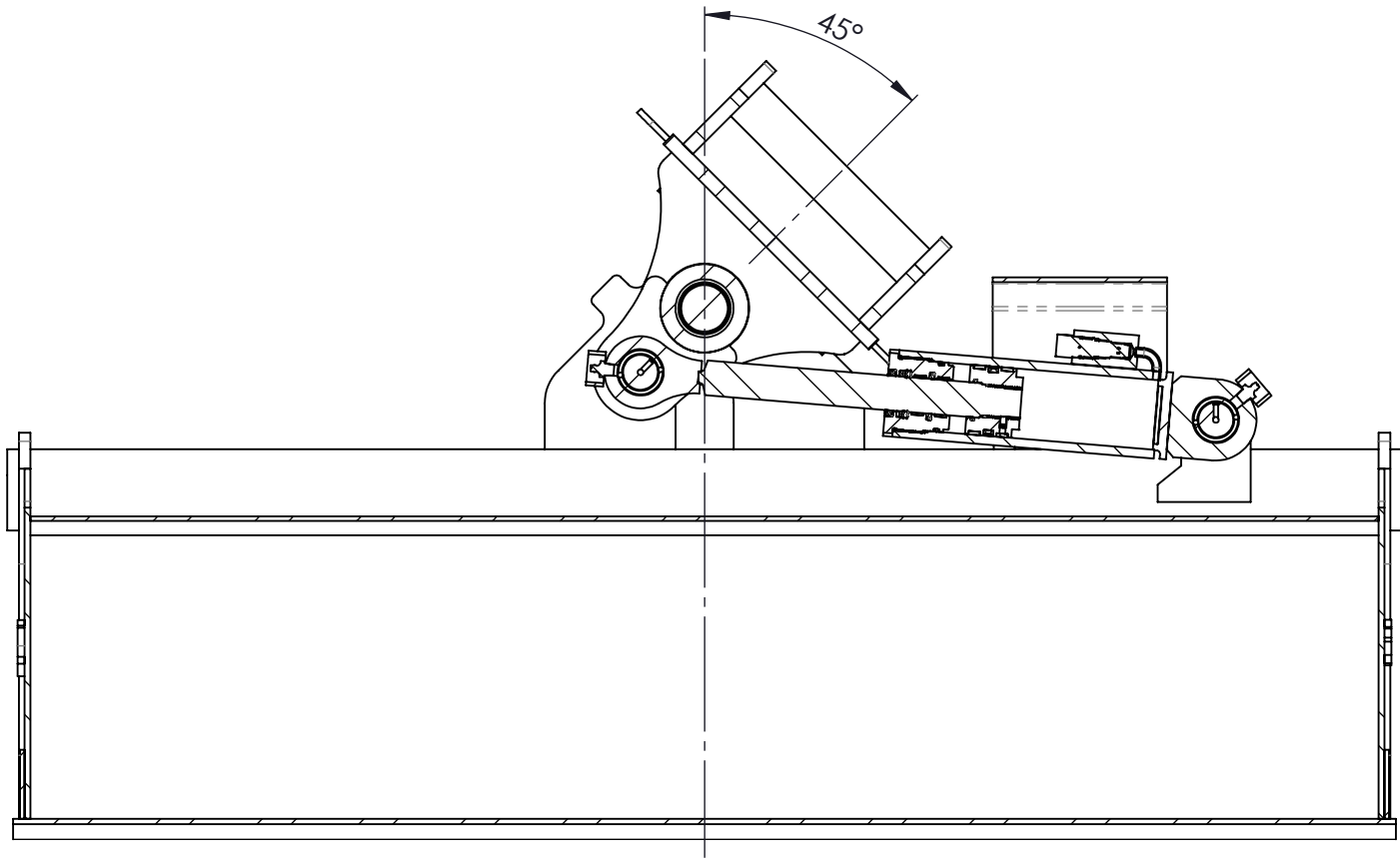
| | | | | | |
|------|------|-------------|-------------|------|-------------|
| XX | | | XX | | |
| ZONE | REV. | DESCRIPTION | CHANGE DOC. | DATE | APPROVED BY |



| | | | | | |
|--|--|---|---|--|--------------------------------------|
| MACHINING TOLERANCES: 0 0.0mm 0.00mm 0.000mm ANGULAR: SURFACE FINISH Ra 3.2 MICRO mm U.O.N. BREAK ALL SHARP CORNERS TO 0.2-0.4x45° ALL DIMENSIONS ARE IN MM. TIGHTENING TORQUES ACCRODING TO EG-002- U.O.N | | ±0.50mm ±0.30mm ±0.20mm ±0.10mm ±0.50 | FABRICATION TOLERANCES LINEAR DIMENSIONS 0 to 500mm LINEAR DIMENSIONS 501mm to 1500mm LINEAR DIMENSIONS > 1501mm TO BE WITHIN ANGULAR PLATE THICKNESS & SECTION SIZE TO BE WITHIN NORMAL AS1365 TOLERANCES U.O.N. WELDING SYMBOLS AND WELDING ACCORDING TO AS 1554.1:2014 ALL WELD SIZES ARE FINAL ALL INSPECTIONS TO BE VISUAL & DIMENSIONAL U.O.N. SURFACE PROTECTION AS PER PROJECT SPECIFICATION | | ±0.5mm ±1.0mm ±2.0mm ±0.5mm |
| TITLE: TILTING BUCKET 2-3T-1200MM-0.123M3 | | | DO NOT SCALE DRAWING IF IN DOUBT, ASK | | |
| SCALE: 1:50 | | | MAT'L : REFER BOM | | |
| DWG No. GC123-S40-1200-43 | | | WEIGHT (KGS): 130.26 | | |
| K and must not be used, reproduced, copied or disclosed in whole or in part without the written permission of ULK. RIGHT © | | | SIZE: A4 SHEETS: 2 OF 3 | | |

| | | | | | |
|------|------|-------------|-------------|------|-------------|
| XX | | | XX | | |
| ZONE | REV. | DESCRIPTION | CHANGE DOC. | DATE | APPROVED BY |

This design or drawing is the property of ULK and must not be used, reproduced, copied or disclosed wholly or in part without the written permission of ULK.
PROPRIETRY, CONFIDENTIAL & COPYRIGHT ©



| | | | | | |
|--|--|---|---|---------------|--------------------------------------|
| MACHINING TOLERANCES: 0 0.0mm 0.00mm 0.000mm ANGULAR: SURFACE FINISH Ra 3.2 MICRO mm U.N.O. BREAK ALL SHARP CORNERS TO 0.2-0.4x45° ALL DIMENSIONS ARE IN MM. TIGHTENING TORQUES ACCORDING TO EG-002- U.O.N | | ±0.50mm ±0.30mm ±0.20mm ±0.10mm ±0.50 | FABRICATION TOLERANCES LINEAR DIMENSIONS 0 to 500mm LINEAR DIMENSIONS 501mm to 1500mm LINEAR DIMENSIONS > 1501mm TO BE WITHIN ANGULAR PLATE THICKNESS & SECTION SIZE TO BE WITHIN NORMAL AS1365 TOLERANCES U.O.N. WELDING SYMBOLS AND WELDING ACCORDING TO AS 1554.1:2014 ALL WELD SIZES ARE FINAL ALL INSPECTIONS TO BE VISUAL & DIMENSIONAL U.O.N. SURFACE PROTECTION AS PER PROJECT SPECIFICATION | | ±0.5mm ±1.0mm ±2.0mm ±0.5mm |
| TITLE: TILTING BUCKET 2-3T-1200MM-0.123M3 | | DO NOT SCALE DRAWING IF IN DOUBT, ASK | | | |
| SCALE: 1:50 | | MAT'L : REFER BOM | | WEIGHT (KGS): | |
| SIZE: A4 | | SHEETS: 3 OF 3 | | | |

| | | | | | |
|------|------|-------------|-------------|------|-------------|
| XX | | XX | | | |
| ZONE | REV. | DESCRIPTION | CHANGE DOC. | DATE | APPROVED BY |

This design or drawing is the property of ULK and must not be used, reproduced, copied or disclosed wholly or in part without the written permission of ULK. PROPRIETRY, CONFIDENTIAL & COPYRIGHT ©